



GAT MONTHLY MEMBERSHIP PROGRESS REPORT

Results as of: 5/31/2023

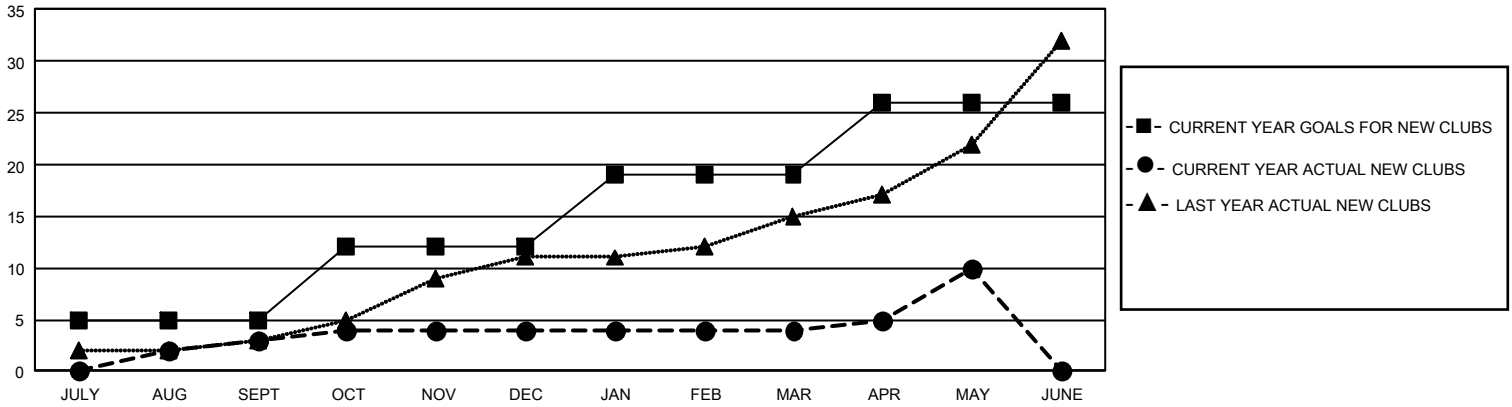
GMT Constitutional Area 3, Group E

REPORT DOES NOT INCLUDE CLUBS IN UNDISTRICTED AREAS.

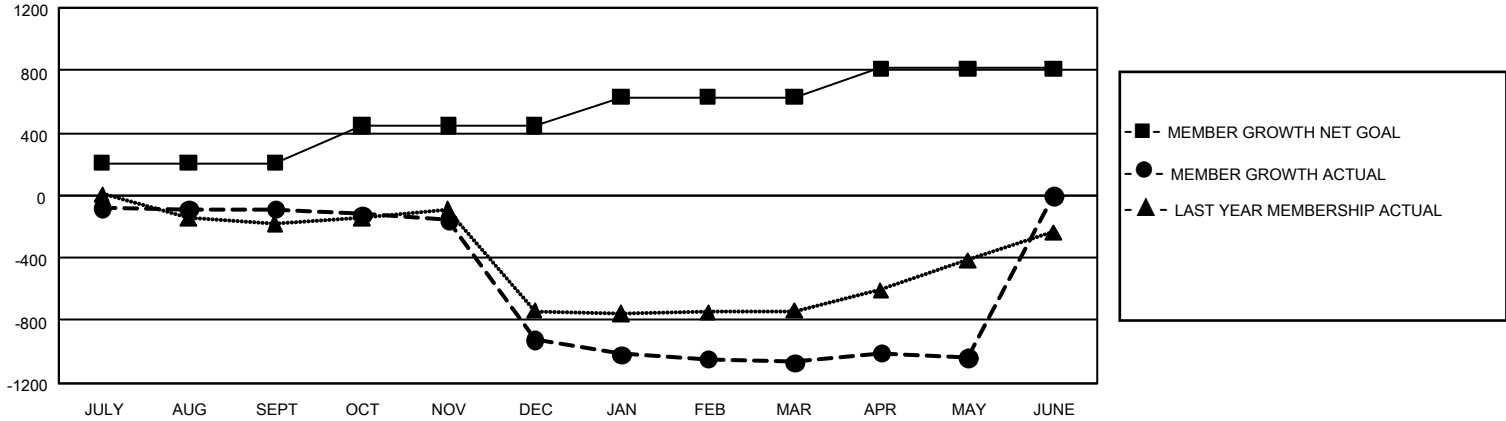
Clubs			
RESULTS FOR 2022-2023			
QUARTER	NEW CLUB GOAL	NEW CLUBS	DROPPED CLUBS
JULY/AUG/SEPT	15	3	7
OCT/NOV/DEC	21	1	21
JAN/FEB/MAR	21	0	9
APR/MAY/JUNE	21	6	6

Members			
RESULTS FOR 2022-2023			
QUARTER	MEMBER GROWTH NET GOAL	MEMBER GROWTH ACTUAL	DROPPED MEMBERS ACTUAL (including transfers)
JULY/AUG/SEPT	209	328	356
OCT/NOV/DEC	234	161	969
JAN/FEB/MAR	185	119	238
APR/MAY/JUNE	183	307	269

GOALS AND ACTUAL NEW CLUBS CUMULATIVE



GOALS AND ACTUAL MEMBERS CUMULATIVE



DROPPED CLUBS: 43	174 CLUBS OF 375 ADDED 1 OR MORE NEW MEMBERS	GENDER DISTRIBUTION	
		MALE 3,409 (45.15%) FEMALE 4,137 (54.79%) NON BINARY 0 (0.00%) PREFER NOT TO ANSWER 4 (0.05%)	
DROPPED MEMBERS		CLICK HERE FOR CUMULATIVE MEMBERSHIP DATA	TOTAL FAMILY UNIT MEMBERS 3,021
DECEASED 66 CLUB CANCELLED 566 OTHER 1,201 TOTAL 1,833			FAMILY MEMBERS PAYING HALF DUES 1,782